

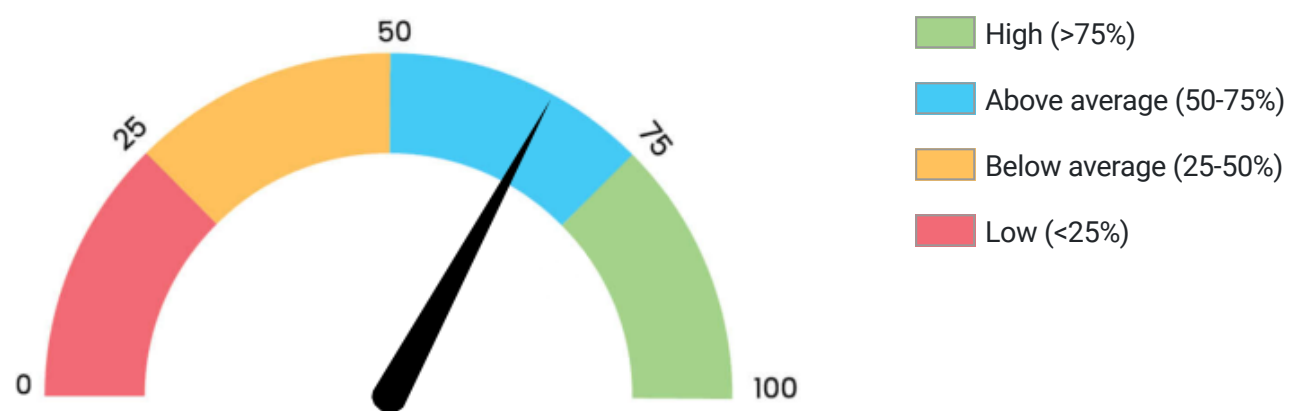
Data-driven talent assessment

Candidate name	John Doe	Date	Sept. 20, 2020
Language	English	Client	Acme inc.
Assessment name	Assessment for Digital media manager	Categories	Abstract Reasoning, Numerical Ability, Verbal Reasoning

Overall score

Test time: 45 minutes

65.2%



John Doe scored better than 65.2% of all candidates who finished an assessment with BRGHT. In a general sense, this means that it will most likely take John less time and effort than average to analyze and understand complex information and to perform associated tasks independently.

Category Analysis

Abstract reasoning

56.0%

John Doe scored better than 56.0% of all candidates in the category abstract reasoning. John has an above average ability to distinguish patterns between different objects and to apply these patterns to other objects. John will therefore most likely be relatively good at following complex reasoning and finding relevant similarities and patterns in changing tasks.

Section	Questions	Correct	Time taken	Expected time
Figure Sequences	6	3	4:00	3:58
Abstract Reasoning	6	5	3:56	4:00

Numerical ability

88.0%

John Doe scored better than 88.0% of all candidates in the category numerical reasoning. John will most likely be very comfortable analyzing data, interpreting graphs and critically reading e.g. financial and marketing reports.

Section	Questions	Correct	Time taken	Expected time
Numerical Reasoning	6	6	7:17	9:02
Number Sequences	6	5	5:29	2:39

Verbal reasoning

43.0%

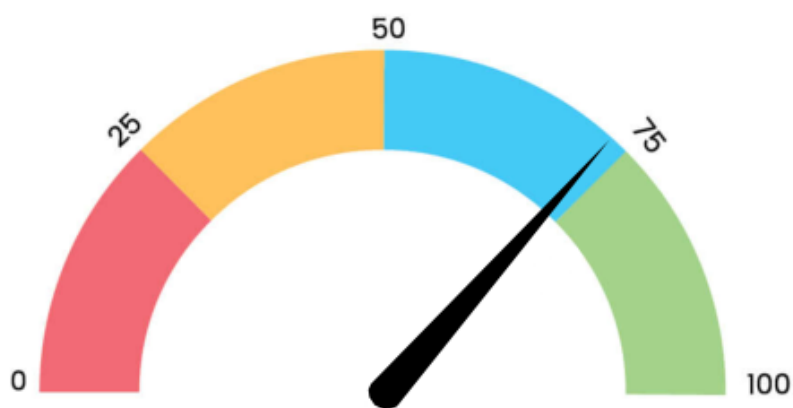
John Doe scored better than 43.0% of all candidates in the category verbal reasoning. John has a below average ability to take a verbal statement to its logical conclusion, recognize erroneous reasoning and distinguish word relationships. It will take John most likely more time and effort than average to read complex reports and compose clear emails.

Section	Questions	Correct	Time taken	Expected time
Venn Diagrams	6	3	1:26	1:30
Syllogisms	6	3	6:07	8:32
Analogies	6	2	5:01	2:02

Efficiency and Accuracy Analysis

Efficiency

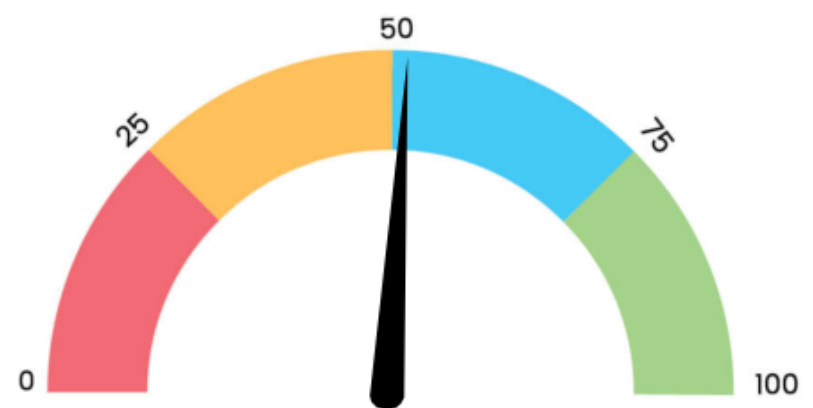
72.0%



John Doe answered more questions than 72.0% of all candidates who finished an assessment with BRGHT. John answered 42 questions, while the average candidate answered 27 questions.

Accuracy

51.0%



John Doe answered 27 questions correctly and made 15 mistakes. John worked more accurately than 51.0% of all candidates who finished an assessment with BRGHT.

Example questions Abstract reasoning

What is the most logical next figure in the series?

1 	2 	3
4 	5 	6

Options:

-
-
-
-
-
-
-
-
-

Which figures should replace the question marks?

Options:

-
-
-
-
-

Example questions Numerical ability

What is the ratio between the Population of Germany and the Population of Luxembourg in the year 2013?

Population (in millions), 2007 - 2014

Year	Germany	France	Belgium	Luxembourg	London
2007	11	9	10	15	6
2008	10	11	10	11	15
2009	5	14	15	12	12
2010	7	13	6	7	12
2011	15	11	10	9	13
2012	6	11	9	8	10
2013	15	14	11	9	10
2014	10	14	13	12	13

GDP in € (in millions), 2011 - 2016

Year	Germany	France	Belgium	Luxembourg	London
2011	1.200e+6	1.100e+6	7.000e+5	1.200e+6	1.300e+6
2012	1.500e+6	6.000e+5	6.000e+5	1.500e+6	1.400e+6
2013	1.200e+6	5.000e+5	1.200e+6	1.500e+6	1.000e+6
2014	1.400e+6	1.400e+6	1.400e+6	8.000e+5	1.500e+6
2015	5.000e+5	5.000e+5	9.000e+5	1.200e+6	1.300e+6
2016	1.500e+6	7.000e+5	5.000e+5	9.000e+5	1.500e+6

Options:

- 1.4
- 2.39
- 1.49
- 1.67
- 2.25
- 2.14

What is the next number in this sequence?

-9 -45 -225 -1125 ?

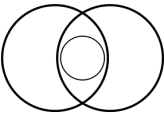
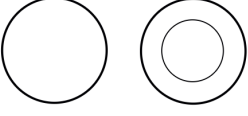
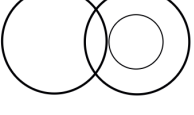
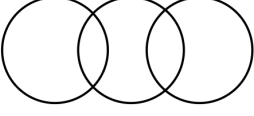
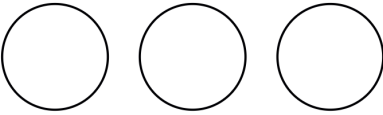
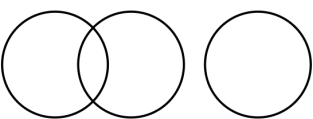
Options:

- 16965
- 5805
- 5625
- 5535
- 10575
- 225

Example questions Verbal reasoning

Which figure best represents the relationship between the following three collections?

- Hospitals
- Physicians
- Buildings

- 
- 
- 
- 
- 
- 

If puppies, baby dogs and little dogs exist, what logical conclusion can be drawn from the following two statements?

- Some little dogs are puppies
 - All puppies are baby dogs
- No baby dogs are little dogs
 - All puppies are little dogs
 - Some puppies are not little dogs
 - None of the other answers is correct
 - All little dogs are puppies
 - Some baby dogs are little dogs
 - All baby dogs are puppies

fly is to ... as ... to down

- butter | load
- bird | below
- sky | below
- bird | up
- bird | load
- sky | off